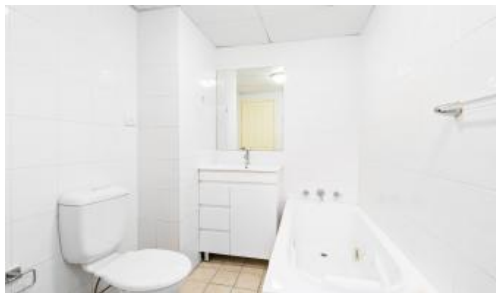


Leased



18, 28A-32 Belmore Street, Burwood



## MODERN CONVENIENCE

On offer is this highly desirable renovated two-bedroom unit providing utmost convenience, positioned only four minutes away from Burwood Station, with trains into the CBD taking only 13 minutes. Burwood Plaza, Westfield shopping, restaurants, cafes, cinemas and Burwood park are all located approximately 10 minutes' walk away.

Features:

- Granite bench top kitchen with gas cooking and new stove & dishwasher
- Open plan living and dining area
- Master bedroom with built in robe and en-suite
- Second bedroom with built in robe
- Floorboards
- Freshly painted
- Main bathroom with bath and shower
- Internal laundry with dryer
- North facing
- Secure basement car space with lift access
- Security building

Available from 30 March 2022.

Contact 9310 5476 or email [pre@progressrealestate.com.au](mailto:pre@progressrealestate.com.au).

 2  2  1

<b>Price</b>	\$520 PER WEEK
<b>Property Type</b>	Rental
<b>Property ID</b>	379

### Agent Details

Jessie Henare - 0293105476

### Office Details

Progress Real Estate  
G04 11A Lachlan Street GREEN  
SQUARE Waterloo NSW 2017  
Australia  
02 9310 5476

**PROGRESS**  
REAL ESTATE

information is accurate and do not have any belief in one way or the other in its accuracy. We do not accept any responsibility to any person for its accuracy and do no more than pass it on. All interested parties should make and rely upon their own inquiries in order to determine whether or not this information is in fact accurate.