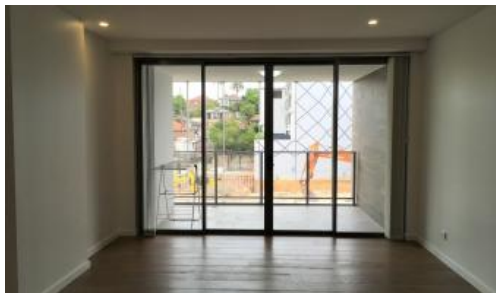




202, 2-6 Martin Avenue, Arncliffe



## MODERN SPACIOUS APARTMENT

On offer is a modern, well positioned one-bedroom apartment located approximately 550m from Arncliffe station and 900m from Wolli Creek station. Enjoy open plan living and dining as well as a full-length balcony and study nook.

Features:

- Large bedroom with built in wardrobe
- Modern kitchen with gas cooking
- Open plan living and dining
- Study nook
- Internal laundry
- Large wrap around balcony
- Storage cage
- Secure car space
- Lift access and intercom

Available from 19 February 2022

Please contact our office on (02) 9310 5476 or [pre@progressrealestate.com.au](mailto:pre@progressrealestate.com.au) for more information.

1 1 1

<b>Price</b>	\$500 pw
<b>Property Type</b>	Rental
<b>Property ID</b>	367

### Agent Details

Jessie Henare - 0293105476

### Office Details

Progress Real Estate  
G04 11A Lachlan Street GREEN  
SQUARE Waterloo NSW 2017  
Australia  
02 9310 5476

**PROGRESS**  
REAL ESTATE

The above information provided has been furnished to us by the vendor/s. We have not verified whether or not that information is accurate and do not have any belief in one way or the other in its accuracy. We do not accept any responsibility to any person for its accuracy and do no more than pass it on. All interested parties should make and rely upon their own inquiries in order to determine whether or not this information is in fact accurate.